


This document set is applicable to the following part number configurations:

 <p>Manifold Pressure and Fuel Flow</p>	<table border="1"> <thead> <tr> <th rowspan="2">Part Number</th> <th colspan="2">Kit Configuration</th> </tr> <tr> <th>Instrument</th> <th>Sensor</th> </tr> </thead> <tbody> <tr> <td>MF200</td> <td>MF200</td> <td>-</td> </tr> <tr> <td>MF200K30</td> <td>MF200</td> <td>1 x A200-PMP 1 X A200-201A-6</td> </tr> <tr> <td>MF200K60</td> <td>MF200</td> <td>1 x A200-PMP 1 X A200-201B-6</td> </tr> </tbody> </table>	Part Number	Kit Configuration		Instrument	Sensor	MF200	MF200	-	MF200K30	MF200	1 x A200-PMP 1 X A200-201A-6	MF200K60	MF200	1 x A200-PMP 1 X A200-201B-6
Part Number	Kit Configuration														
	Instrument	Sensor													
MF200	MF200	-													
MF200K30	MF200	1 x A200-PMP 1 X A200-201A-6													
MF200K60	MF200	1 x A200-PMP 1 X A200-201B-6													

MF200X Manifold Pressure and Fuel Flow

THIS IS A TRANSPORT CANADA APPROVED MANUAL

The following checklist outlines the required articles for all MF200X products:

	Documentation	Document Number
<input type="checkbox"/>	Introduction (this document)	S200-MF200X-001
<input type="checkbox"/>	Warranty Statement	S200-AWS
<input type="checkbox"/>	Installation Instructions	S200-MF200X-002
<input type="checkbox"/>	Intensity Control Installation Options	S200-DDC-INST
<input type="checkbox"/>	Wiring and Installation Schematic	S200-MF200X-003
<input type="checkbox"/>	Human Interface Definition	S200-HID
<input type="checkbox"/>	Instrument Setup	S200-MF200X-004
<input type="checkbox"/>	Operations Guide	S200-MF200X-005
<input type="checkbox"/>	Product Specifications	S200-MF200X-006
<input type="checkbox"/>	Installation Compliance	S200-MF200X-007
<input type="checkbox"/>	Instructions for Continued Airworthiness	S200-ICA
<input type="checkbox"/>	Flight Manual Supplement	S200-FMS (If applicable)
<input type="checkbox"/>	Authorized Release Certificate	FORM ONE
<input type="checkbox"/>	Permission to Use STC	S200-PTU
<input type="checkbox"/>	Canadian STC and Eligibility List	STC & S200-CEL
<input type="checkbox"/>	FAA STC and Approved Model List	STC & S200-AML

Components

- MF200 Instrument and harness
- 1 X A200-201x-6 Fuel Flow Sensor as required
1 X A200-PMP sensor
- 4 X Mounting Screws

MF200X Manifold Pressure and Fuel Flow

The Fastest Way To Install And Start Using This Product

NOTE: This product is certified as a primary replacement, new or secondary instrument only when installation is performed in accordance with the documented instructions and procedures.

1. Review the Warranty Statement before performing any tasks. Do not remove the instrument from the sealed package until you agree with the stated terms.
2. If this instrument is to be installed in a certified aircraft, verify that the aircraft model is listed on the Eligibility List (Canadian registered aircraft) or the Approved Model List (USA and all other countries).

If it is NOT listed, contact your local authority and obtain the necessary requirements or approvals before proceeding further.

For all other vehicles, including experimental aircraft continue with Step 3.

3. Follow the Installation Instructions exactly as noted, referring to the Wiring Diagram as and when required. Note: The installation process has been optimized based on the sequence of components to be installed. Installing the product in any other way will, in all likelihood, take longer and be more complex.

Ensure that **one** of the Intensity Control options has been installed in accordance with document # S200-DDC-INST.

4. Perform the Instrument Setup using the required data as listed in the Instrument Setup procedure.
5. Validate that all functions perform as outlined in the Operations Guide.
6. Complete all regulatory documentation, if required.



NO NONSENSE WARRANTY

Our warranty policy is simple It is even written in plain English!

Please read it BEFORE DOING ANYTHING WITH YOUR NEW INSTRUMENT!

If you require technical support when installing your instrument please call our Technical Support department directly on 416-628-0725

We will:

- Repair or replace (at our discretion) any instrument which becomes defective within a period of 12 (twelve) months of manufacture date. You will pay for the shipping costs to return the instrument to us and we will pay for the shipping costs to return the instrument to you;
- Replace all instruments that fail out of warranty for a flat rate of 50% of the cost of a new instrument, at the time of the failure.

We are not:

- Liable for any costs associated with the installation or removal of any of our instruments, irrespective of the cause;
- Liable for any misuse or non-use of the instrument in whatever form.

We will not:

- Repair or replace your instrument free of charge, under warranty, if it has not been installed by an appropriately licensed person.

If you do not agree with ANY of the above statements, return your new instrument to us immediately for a FULL refund LESS shipping costs.

ALL RETURNS REQUIRE RETURN MATERIAL AUTHORIZATIONS (RMA). WE DO NOT ACCEPT RETURNS WITHOUT RMA NUMBERS. CALL 416-628-0725 FOR AUTHORIZATION.

MF200X Installation Instructions

1. Sensor Installation:
 - a. Install one sensor, of appropriate type, in the fuel line,
 - b. For fuel flow less than or equal to 30GPH use P/N A200-201A-6,
 - c. For fuel flow greater than 30GPH use P/N A200-201B-6,
 - d. Install manifold pressure sensor P/N A200-PMP,
 - e. in accordance with the manufacturer supplied instructions for these sensors.
2. Connect the wiring supplied with the DB25 interface connector in accordance with the MF200X Wiring and Installation Schematic. **DO NOT ATTACH THE CONNECTOR TO THE INSTRUMENT UNTIL ALL WIRING HAS BEEN CONNECTED.**
3. Select the instrument location in the aircraft panel.
4. Ensure that the aircraft master switch and/or power to the instrument is **OFF**.
5. Attach the DB25 connector to the instrument. Ensure that the plug is fully inserted into the instrument. Finger tighten the two plug locking screws, then tighten 1/8 turn using a screwdriver. **DO NOT OVERTIGHTEN.**
6. The instrument can be installed with the DB25 connector orientated to the **TOP** or **BOTTOM** of the instrument panel.
7. Install the instrument in the panel, attaching with four 6-32 X 5/16" screws.
8. Initial Power Up Sequence:
 - a. Adjust the instrument intensity control for maximum intensity.
 - b. Apply power to the instrument.
 - c. The instrument display will light up.
 - d. The display may be inverted at this point. Ignore the orientation.
 - e. Turn the instrument **OFF**.
9. If the instrument display does not light up:
 - a. Ensure intensity control is set for maximum.
 - b. Turn off power.
 - c. Disconnect the DB25 connector from the instrument.
 - d. Check intensity control.
 - e. Check the wiring installation and breaker or fuse.
10. Proceed to "Instrument Setup".

Intensity Control – Installation Options

Applicable to Rev 05 and later 200 Series Instruments

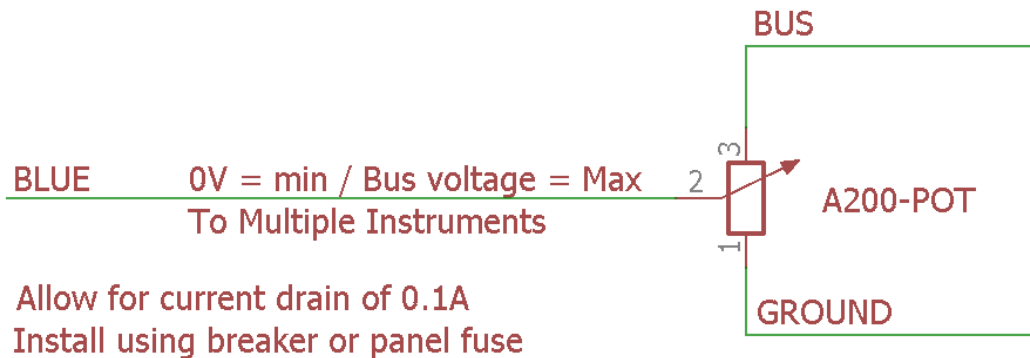
Choose ONE of the options listed below for connection of the BLUE intensity control wire from the instrument harness.

Theory of Operation

- The instrument intensity control is voltage sensitive.
- When the sense input is grounded the instrument display will be at the dimmest intensity. At bus voltage the instrument display will be at the brightest intensity.
- Voltages between these two will vary the display intensity.

1. Preferred Method – Independent Potentiometer

Connect the BLUE wire to P/N A200-POT Rev. 02 as below:



Ensure the “EXTERNAL” option in the Dimmer Control menu is set.

2. Connection of Existing Panel Intensity Control

Confirm the existing panel lighting control meets the following requirements:

- When set for **DAY** operation **BUS** voltage must be output.
- When used at **NIGHT** the output must vary from **0V** (Ground) to **BUS** voltage.

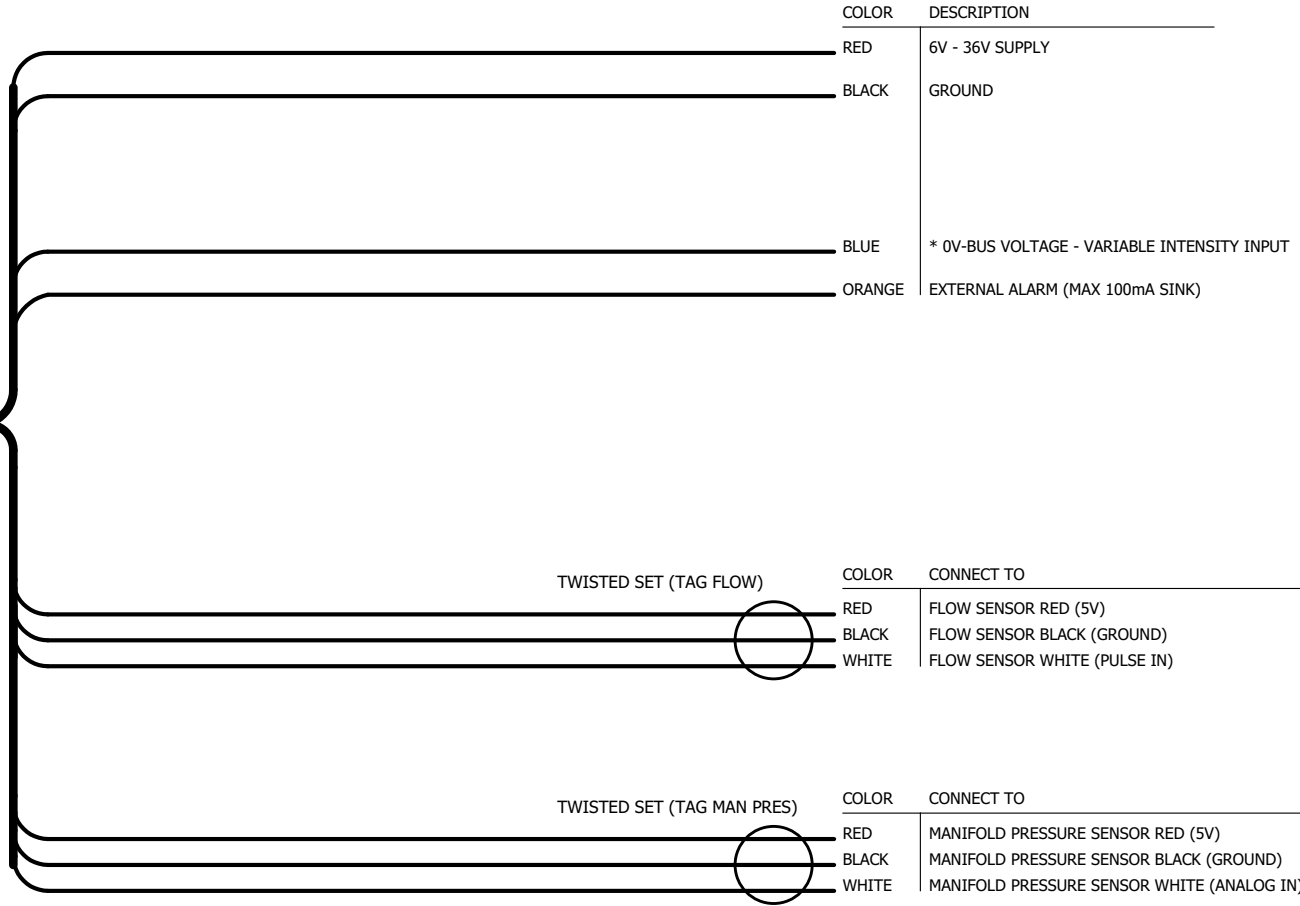
If these requirements are met connect the BLUE wire to the panel lighting control.

Ensure the “EXTERNAL” option in the Dimmer Control menu is set.

3. Day VFR Operation

Do not connect the BLUE wire. Set the intensity using the internal Dimmer Control.

Refer to document S200-HID, Intensity Control section for menu access instructions.



INSTALLATION NOTES:

1. Allow for current drain of 0.1A (100mA)
2. Install using breaker or panel fuse
3. Maximum 7 instruments per 1A of breaker capacity
4. For multiple instrument installations install breakers to comply with redundancy requirements of AC 23.1309-1D Appendix 1

ACCESSORY NOTES:

1. * See S200-DDC-INST for additional intensity control options
2. For manifold pressure sensor use sensor P/N A200-PMP
3. For fuel flow 1GPH to 30GPH use sensor P/N A200-201A-6
4. For fuel flow >30GPH to 60GPH use sensor P/N A200-201B-6

MF200X Wiring and Installation Schematic

200 Series Human Interface Definition

All 200 Series instruments have been designed around a standard Human Interface protocol. This allows identical operation of the two panel switches between all instruments while still allowing multiple functions. This document is a generic outline of the functionality of the switches, based on the various functional states of the instrument.

Top Button

The top button is the action button. It invokes different screen displays, allows selection of values and increments or decrements values. Examples of these actions are:

1. Moving between display screens
2. Selection of an action from a menu
3. Changing a value from within the setup menus
4. Entering a value during flight (clock instrument only)

Bottom Button

The bottom button is the navigation button. It will allow the cursor on the screen to move between allowable selections. Examples of these actions are:

1. Selection of different cylinders (EGT and CHT) in the Single Cylinder mode
2. Selection of different tanks (Fuel Level)
3. Selection of limits and functional items from within the setup menus
4. Time field selection (clock instrument only)

There is one exception to the functionality of the bottom button. This is from the Primary Display (the screen that first comes on from power up). Pressing the button will display the instrument core status and support data.

General

1. Each instrument contains detailed button options in the Operations Guide.
2. During setup, instructions are provided on screen and use of the buttons is as noted in this document.

Intensity Control

Press and hold the top button for 5 seconds to activate the Dimmer Control menu.

Select the “Up Arrow” and press the top button to disable external intensity and increase intensity. Select the “Down Arrow” and press the top button to decrease the intensity and enable external intensity control.

Select the “Save” option and press the top button to save your selection and return to normal operations.

The Dimmer Control menu is not available during instrument setup.

MF200X Instrument Setup

1. Before proceeding with the instrument setup you will require the following information, as it pertains to the aircraft that the instrument is being installed on:
 - a. Minimum operating manifold pressure
 - b. Maximum operating manifold pressure
 - c. Manifold pressure redline
 - d. Low limit fuel flow (point at which the indicator bar indicator is activated)
 - e. High limit fuel flow (maximum continuous allowable flow)
 - f. Red line fuel flow value
 - g. Fuel sensor K-Factor (available from the sensor documentation)

2. This information must be obtained from a current, traceable source for the aircraft that the instrument is being installed on. Some possible sources are:
 - a. Pilot Operating Handbook
 - b. Maintenance Manual
 - c. Aircraft Type Certificate Data Sheet
 - d. Engine Type Certificate Data Sheet
 - e. Manufacturer

3. Then, enter the correct parameters into the instrument as follows:
 - a. Turn off the power to the instrument
 - b. Press and hold both top and bottom buttons and turn on the power to the instrument.
 - c. When instructed, release both buttons.
 - d. In the setup menus, use the bottom button to navigate and the top button to select an option.
 - e. Follow the onscreen instructions. **NOTE: Depending on the installation orientation of the instrument the display may initially be upside down. The first prompt in the setup is to press the button at the top of the instrument. This will orientate it correctly.** Continue with setup.

MF200X Instrument Setup

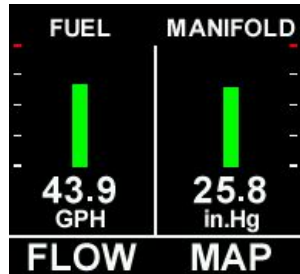
4. Once all steps of the setup have been completed, the instrument will provide the option to edit any data or to save and exit.
5. If the data entered is correct, choose the “OK” option to save the data and exit setup, otherwise choose “EDIT”.
6. Once the instrument has exited the setup it will restart. It is now ready for use.

MF200X Operations Guide

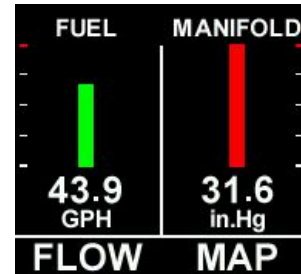
This manual outlines the operating procedures for all MF200X series products

1. Power Up / Default Screen

Displays fuel flow and manifold pressure information. Colors are determined by the range values as set during installation.



Normal Operations

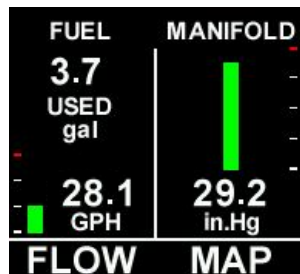


Out-of-Limit Condition

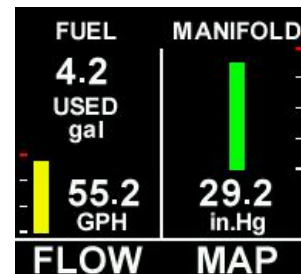
Press the top button once to move to the next display.

2. Fuel Flow, Fuel Used and Manifold Pressure Screen

Displays the fuel used, fuel flow and manifold pressure information.



Normal Operations



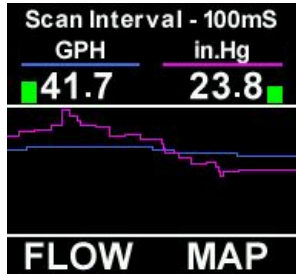
Out-of-Limit Condition

Fuel used is the total fuel used since the instrument was last restarted. **NOTE:** Each time the instrument restarts the "USED" amount is reset to zero.

Press the top button once to move to the next display screen.

MF200X Operations Guide

3. Trend Graph



This screen provides a graphical display of fuel flow and manifold pressure.

The data values are displayed with miniature versions of the bars as on the default screen as well as digital values of the specific parameters.

The “Scan Interval” can be changed by pressing the bottom button.

To freeze the display, press the top button ONCE.

To continue displaying information in this mode, press the bottom button **ONCE**, OR, to return to the default screen, press the top button once.

4. Other Options

To display the instrument serial number and core information press and hold the bottom button when in the default screen.

WARNING

The MF200 instrument may only be installed as a primary instrument when an exhaust gas temperature or cylinder head temperature instrument is installed (any manufacturer) in the aircraft, for each engine.

This is a requirement in meeting the failure mode criteria of AC 23.1309-1D Appendix 1

WARNING

All engine operations are to be performed in accordance with the specific instructions pertaining to your aircraft, including those provided by the engine manufacturer. The MF200X series instruments are only parameter reporting devices which can assist in engine management when used in conjunction with these instructions.

All MF200X products are certified as primary replacements, within the limits as described above, or for secondary use as desired.

MF200X Product Specifications

Certification / Compliance

TSO	C45b & C44C
Environmental	DO-160F
	A1CAASXXXXXXXXZBXXBBBCSBA1C11XXAX
Software	DO-178B

DC Power Source

Input voltage	6 to 36 VDC
Power consumption	100mA
Load dump tolerance	+60V
Direct spike tolerance	+/- 60V
Cable spike tolerance	> +/- 1KV

Operating Temperature

Constant operating	-15°C to +55°C
Short term operating (1hr)	-40°C to +70°C
Storage	-55°C to +85°C

Signal Input

Manifold Pressure	0.5V to 3.0V
Fuel Flow	0V – 5V Square wave

Display Units

Manifold Pressure - inHg
Fuel Flow - GPH or LPH, user selectable

Display

Manifold pressure	0.0 to 50.0 inHg
Fuel flow	0.6 to 60 GPH
Fuel used	0 to 999.9 USG

Accuracy

Manifold pressure AS8042	+/- 0.1 inHg
Fuel flow	+/- 0.1 GPH

Display

Sunlight readable LCD
80/80/80/80 Degree viewing angle

Annunciator Output

100mA sink with reverse EMF protection
--

Interface Connector

DB-25

Software Functionality

Primary (Default)	Fuel flow and manifold pressure
Primary (Selected)	Fuel flow, fuel used and manifold pressure
Trend Graph	Graphic display of fuel flow and manifold pressure

Dimensions

2.45" X 2.45" X 0.96"

Weight (excluding harness)

4.05 oz

Finish

Black anodized 6061 aluminum

MF200X Installation Compliance

1. Installation Procedures and Limitations

Should your specific aircraft not be listed on our STC Approved Model List (AML), contact your local FSDO or flight authority for installation requirements **BEFORE commencing any installation tasks.**

Installation must be in accordance with the following MF200X published documents:

- a. Installation Instructions,
- b. Wiring and Installation Schematic, and
- c. Instrument Setup.

2. Installation Location and Visibility

The products are to be installed in existing panel holes and will replace existing instrumentation. As primary replacement products it is recommended and preferred that they be placed in the same panel location as the original equipment. Their visibility and placement relative to other instruments are the same or similar to the existing instruments. Where they are installed in a different location it is the responsibility of the installer to ensure that they are visible to the pilot under all conditions.

3. TSO COMPLIANCE NOTICE

The conditions and tests required for TSO approval of this instrument are minimum performance standards. Those installing this instrument on or in a specific type or class of aircraft, must determine that the aircraft installation conditions are within the TSO standards. TSO articles must have separate approval for installation in an aircraft. The instrument may be installed only according to 14 CFR part 43 or the applicable airworthiness requirement.